

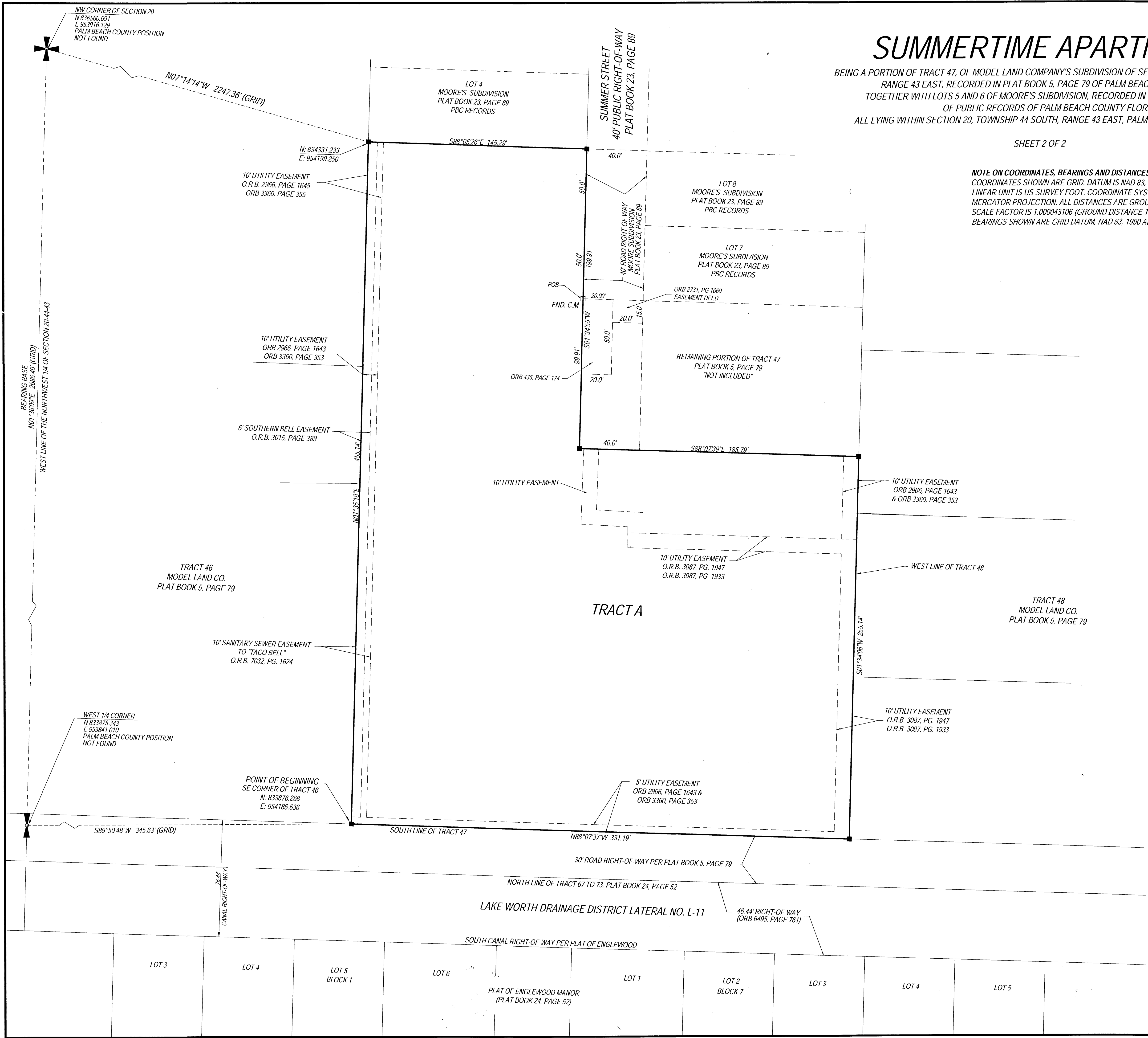
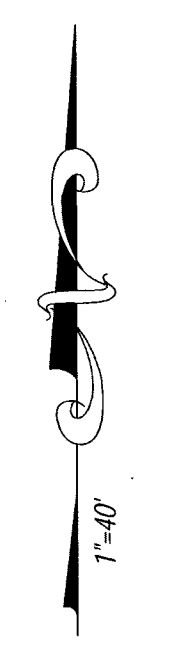
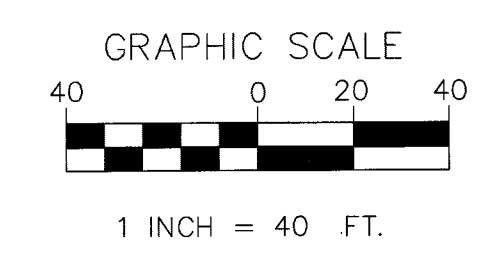
105

# SUMMERTIME APARTMENTS

BEING A PORTION OF TRACT 47, OF MODEL LAND COMPANY'S SUBDIVISION OF SECTION 20, TOWNSHIP 44 SOUTH, RANGE 43 EAST, RECORDED IN PLAT BOOK 5, PAGE 79 OF PALM BEACH COUNTY FLORIDA.  
TOGETHER WITH LOTS 5 AND 6 OF MOORE'S SUBDIVISION, RECORDED IN PLAT BOOK 23, PAGE 89 OF PUBLIC RECORDS OF PALM BEACH COUNTY FLORIDA.  
ALL LYING WITHIN SECTION 20, TOWNSHIP 44 SOUTH, RANGE 43 EAST, PALM BEACH COUNTY, FLORIDA.

SHEET 2 OF 2

**NOTE ON COORDINATES, BEARINGS AND DISTANCES:**  
COORDINATES SHOWN ARE GRID. DATUM IS NAD 83, 1990 ADJUSTMENT. ZONE IS FLORIDA EAST. LINEAR UNIT IS US SURVEY FOOT. COORDINATE SYSTEM IS 1983 STATE PLANE TRANSVERSE MERCATOR PROJECTION. ALL DISTANCES ARE GROUND (UNLESS OTHERWISE NOTED). SCALE FACTOR IS 1.000043106 (GROUND DISTANCE TIMES SCALE FACTOR IS GRID DISTANCE). BEARINGS SHOWN ARE GRID DATUM, NAD 83, 1990 ADJUSTMENT, FLORIDA EAST ZONE.



- \* ABBREVIATIONS:**  
ORB = OFFICIAL RECORD BOOK  
PG = PAGE  
PBC = PALM BEACH COUNTY
- LEGEND**  
■ SET 4x4" CONCRETE MONUMENT AND BRASS DISK STAMPED "PRM - LB 8261"  
● SET 1/2" IRON ROD AND CAP "LB 8261"  
□ FOUND 4x4" CONCRETE MONUMENT (PERMANENT REFERENCE MONUMENT)  
○ FOUND NAIL AND DISK  
--- EASEMENT LINE



**PRINCIPAL MERIDIAN SURVEYING INC.**  
4546 CAMBRIDGE STREET  
WEST PALM BEACH, FL 33415  
PHONE 833.478.7764 / FAX 561.478.1094  
WWW.PMSURVEYING.NET  
JOB # 07070353

**\* PREPARING SURVEYOR & MAPPER'S STATEMENT:**  
THIS INSTRUMENT WAS PREPARED BY DOUG WALKER, P.S.M. # 7211, STATE OF FLORIDA, IN AND FOR THE OFFICES OF PRINCIPAL MERIDIAN SURVEYING, INC., AT 4546 CAMBRIDGE STREET, WEST PALM BEACH, FLORIDA, 33415. CERTIFICATE OF AUTHORIZATION # 8261